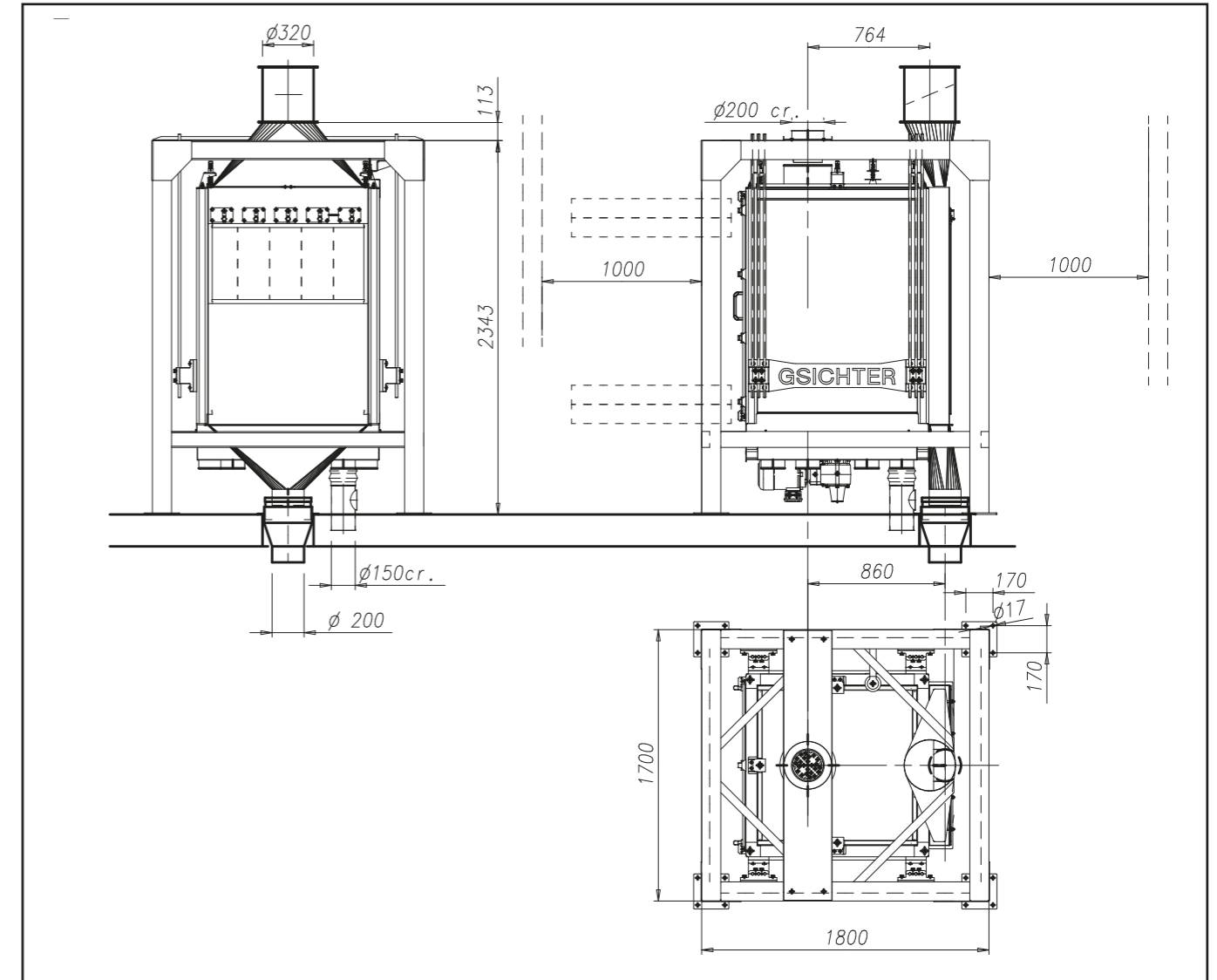


GSICHTER

Plansichter for cereals

Strong metallic construction containing aluminium sieve stacks with 12m² of sifting surface.

- Aspiration channel built-in in the structure of the plansifter;
- Simple system for sieve locking;
- Incorporated motor;
- Fitting sturdy support structure made of section iron resting on the floor.



Sifting area m ²	* Capacity t/h wheat	Power kW	Air consumption m ³ /1'	Weight Kg
12	35	2,2	80	1800

* Soft wheat 0,75t/m³
Units = mm